

**CO<sub>2</sub> emissions from heavy-duty vehicles**  
**THE IMPACT OF HEAVY-DUTY VEHICLES  
ON THE ENVIRONMENT  
AND THE EUROPEAN REGULATION**

**Gianmarco GIORDA**  
**Managing Director - ANFIA**

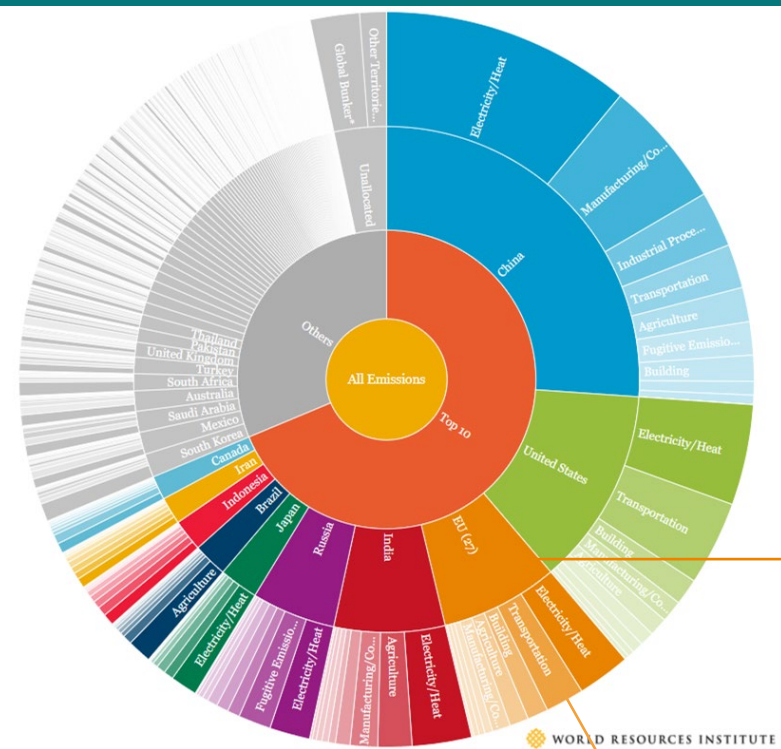
**29<sup>^</sup> UN Climate Change Conference**  
**Baku - *November 21, 2024***



**#COP29**

# GHG emissions in the world by countries

# GHG emissions in the EU by sectors

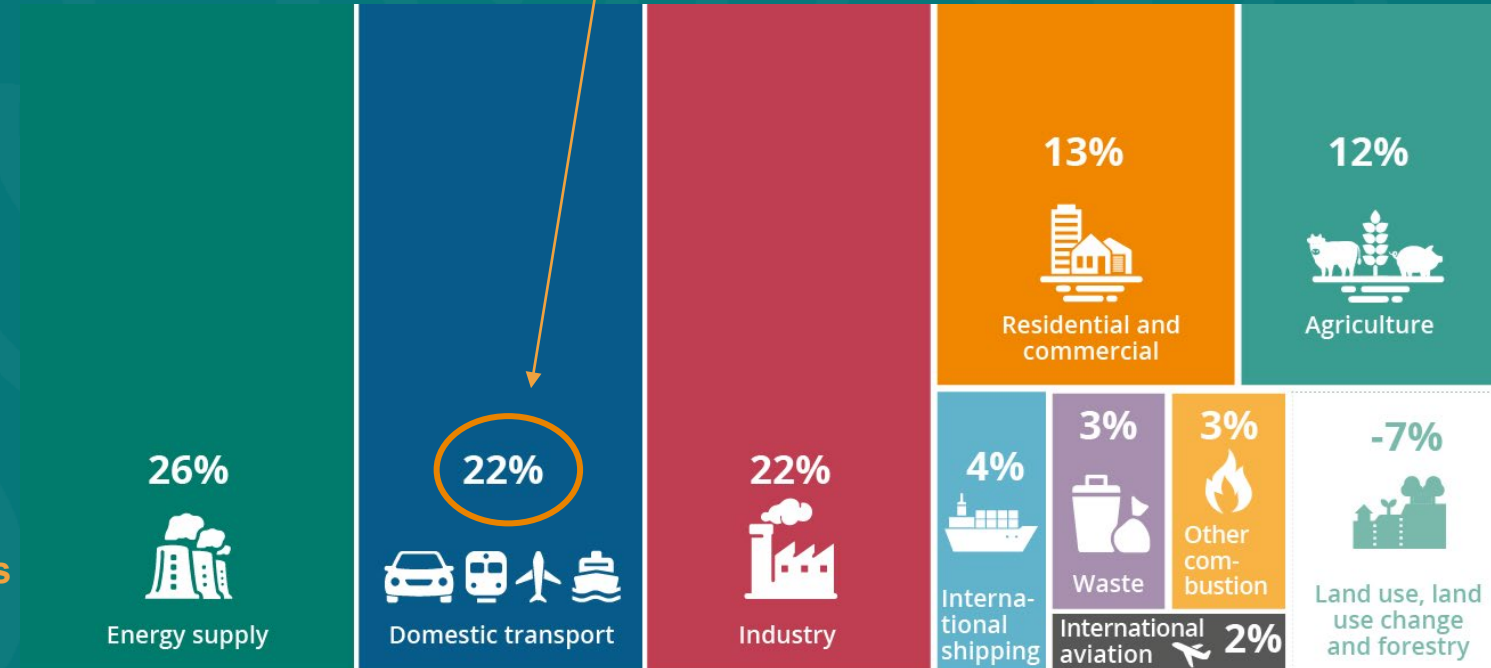


EU Total Emissions  
6.7 % of global  
GHG emissions

EU Transportation Emissions  
1.47 % of global GHG  
emissions

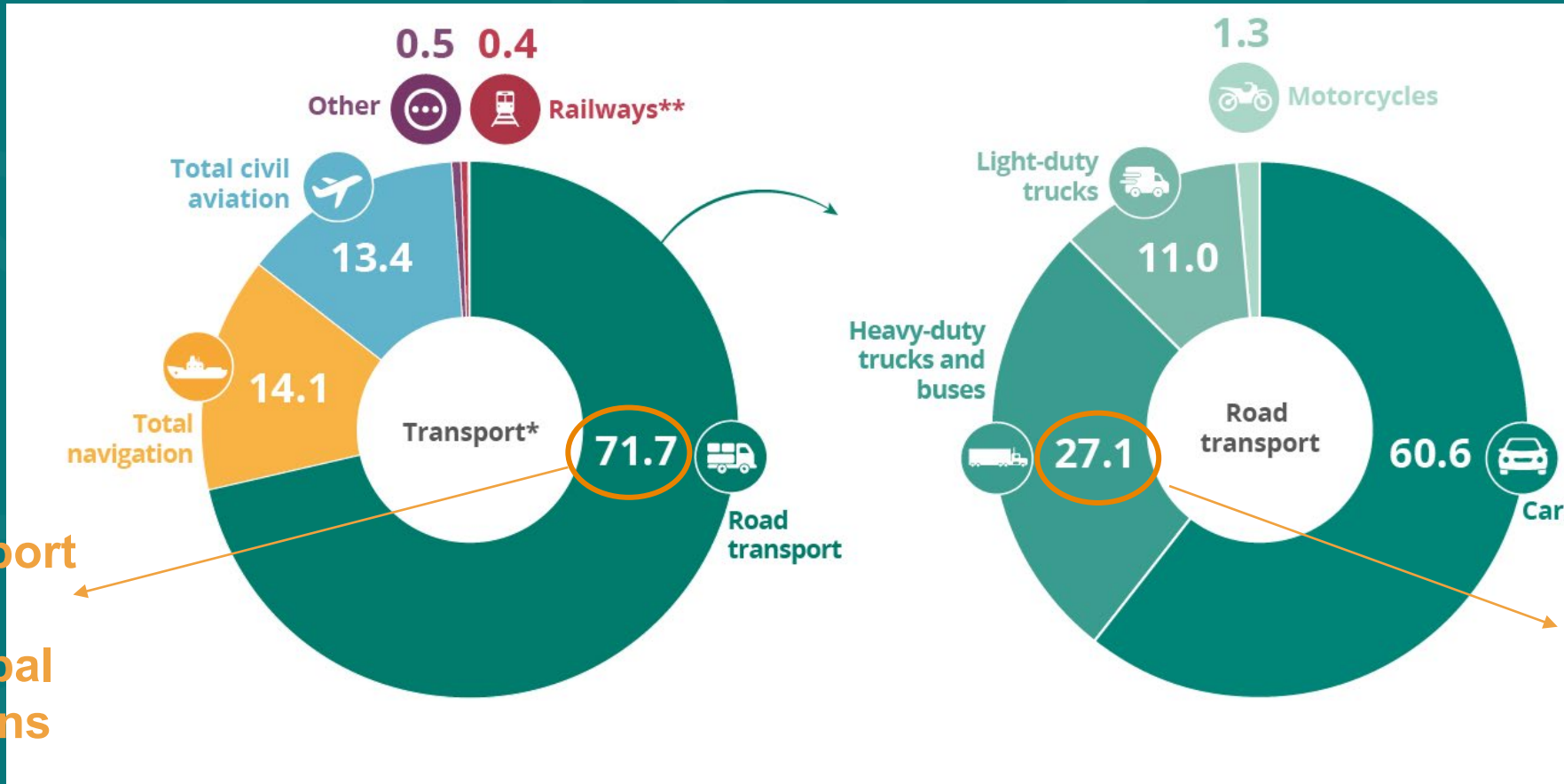
Source: JRC 2023 , WRI <https://www.wri.org/insights/interactive-chart-shows-changes-worlds-top-10-emitters> Global GHG Emissions 2019 excluding LUCF

EU Transportation Emissions  
1.47 % of global GHG emissions



Source: EEA report 2023 <https://www.eea.europa.eu/signals-archived/signals-2022/infographics/what-are-the-sources-of/view>

# GHG emissions from transport in the EU

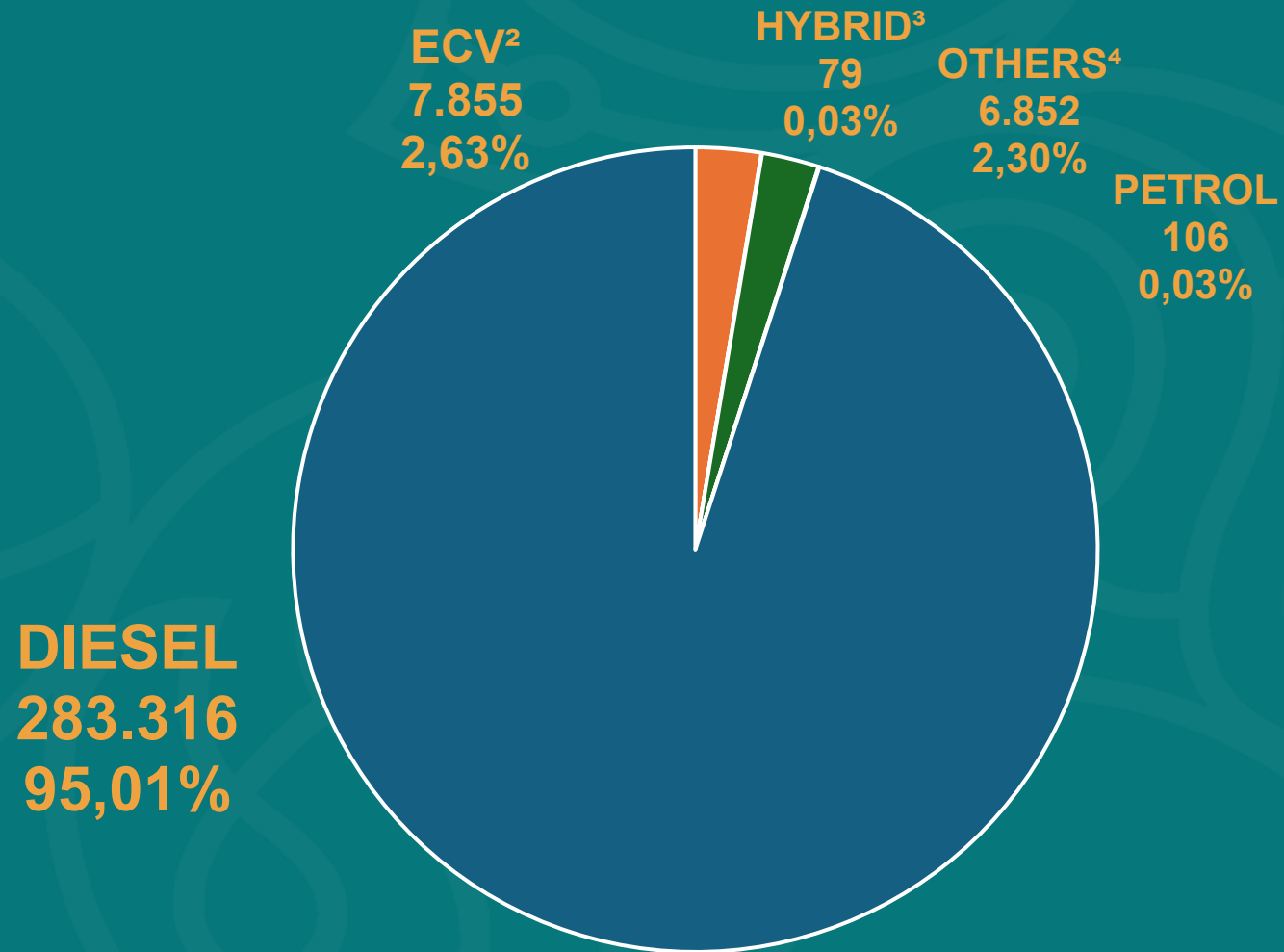


EU road transport emissions 1.05 % of global GHG emissions

EU Heavy duty vehicles Emissions 0,28 % of global GHG emissions

Source: EEA report 2023 <https://www.eea.europa.eu/signals-archived/signals-2022/infographics/what-are-the-sources-of/view>

# M-HCV1 Registrations in EU+EFTA+UK by Fuel – YTD 09/2024



<sup>1</sup> Medium and heavy commercial vehicles over 3.5 tonnes <sup>2</sup> Includes battery electric and plug-in hybrids <sup>3</sup> Includes full and mild hybrids <sup>4</sup> Includes fuel cell electric vehicles (FCEVs), natural gas vehicles (NGVs), LPG, E85/ethanol and other fuels

# Target CO<sub>2</sub> emissions reduction for Heavy duty Regulation UE 2024/1610



2025

2030

2035

2040

**90% Electric  
Urban Buses**

**100% Electric  
Urban Buses**

**- 15%  
Compared  
to 2019**

**- 45%  
Compared  
to 2019**

**- 65%  
Compared  
to 2019**

**- 90%  
Compared  
to 2019**

**7,5% trailer  
10% semitrailer  
Baseline  
7/25 – 6/26**